

Model Shown:

RSS2503, RSS302

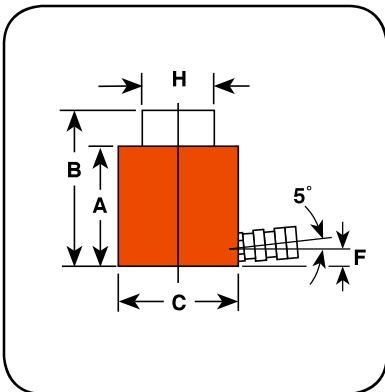


Features

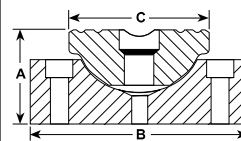
IDEAL FOR CONFINED AREAS WITH 88,9 TO 290,5 MM CLEARANCE.

- “Power-Tech” nitro-carburization surface treatment inhibits corrosion and provides exceptional durability for the rod and piston.
- Heavy-duty return spring (except for double-acting models) provides fast piston return & low collapsed height.
- Coupler on 10 - 50 ton models is angled upward 5° for added clearance.
- Grooved piston top keeps load from sliding.
- Cylinders can be “dead-ended” at full capacity.
- Removable carrying handles on 100 and 250 ton models.
- Complies with ANSI / ASME B30.1 safety standards.

Technical Dimensions



Optional Swivel Load Caps Ordering Info



Reduce the effects of off-center loading. Tilts up to 5 degrees. Radial grooves on top of cap reduce load slippage. Notch across face of each cap helps keep loads having a protruding or round shaped centered.

Use with Cyl. No.	Swivel Cap Order No.	Wt. (kg)	A (mm)	B (mm)	C (mm)
RSS101	350320	0,2	25,4	36,6	36,6
RSS202	350321	0,6	35,1	54,1	54,1
RSS302	350322	0,7	35,1	63,5	54,1
RSS502	350331	1,2	36,6	82,6	54,1
RSS1002	350332	3,0	46,0	111,3	85,7

Ordering Information

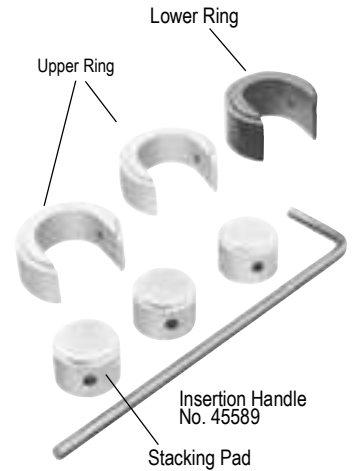
Cyl. Cap. (ton)	Stroke (mm)	Order No.	Oil Cap.		A	B	C	F	H	Bore Dia. (mm)	Cylinder Effective Area (cm²)	Metric Tons at 700 (bar)	Prod. Wt. (kg)
			(cm³)		Retracted Height (mm)	Extended Height (mm)	Outside Dia. (mm)	Base to Port (mm)	Piston Rod Dia. (mm)				
			Push	Return	(mm)	(mm)	(mm)	(mm)	(mm)				
10	38,1	RSS101	56	–	88,9	127,0	69,9	15,9	38,1	42,9	14,4	10,2	2,7
20	44,5	RSS202	126	–	95,3	139,7	90,5	15,9	54,8	60,3	28,6	20,0	4,5
30	62,0	RSS302	259	–	117,5	179,4	101,6	15,9	63,5	73,0	41,9	29,5	6,7
50	60,5	RSS502	374	–	127,0	187,3	123,8	19,1	79,4	88,9	62,0	43,6	10,5
100	57,2	RSS1002	725	–	139,7	196,9	168,3	23,8	111,1	127,0	126,6	89,1	21,4
100	38,1	RSS1002D*	482	212	144,5	182,6	174,6	23,8*	95,3	127,0	126,6	89,1	24,7
250	76,2	RSS2503	2469	–	290,5	366,7	250,8	36,0	139,7	203,2	323,9	227,8	99,7

* Note: RSS1002D is double-acting.



Optional Cylinders Cribbing Blocks

Cribbing blocks are shown on a 30 ton RSS302 "Shorty" cylinder. Each kit includes:



The Insertion tool (45589) is used for keeping hand from load.

► **Cribbing Block Ordering Information**

For Use With		30 Ton Cylinder Number RSS302			50 Ton Cylinder Number RSS502			100 Ton Cylinder Number RSS1002		
Order No.		30 Ton Set Number CB30			50 Ton Set Number CB50			100 Ton Set Number CB100		
		Lower Ring	Upper Ring	Stacking Pad	Lower Ring	Upper Ring	Stacking Pad	Lower Ring	Upper Ring	Stacking Pad
Number included in set		1	2	3	1	2	3	1	2	3
Outside Diameter	(mm)	114,30	114,30	69,85	139,70	139,70	85,85	187,71	187,71	120,7
Inside Diameter	(mm)	71,37	71,37	–	87,63	87,63	–	122,17	122,17	–
Height, each	(mm)	57,91	45,72	45,21	56,39	43,69	42,93	54,10	44,45	43,7
Total stacked height of rings in set	(mm)	149,35			143,76			187,45		
Weight of set	(kg)	9,1			12,7			29		

Note: Each set includes one Insertion Handle 45589 - 0,5" Hex x 18" Long, 4" Bend

► **RSS302 is perfect for any bridge construction application.**



Cribbing Block Operation

Convert Power Team "Shorty" cylinders to mechanical cribbing devices. They are more stable and safe than timber or other awkward, make-shift methods. Ideal for lifting applications such as structure moving. Reduces cribbing time dramatically. In effect, increases the stroke of the cylinder as stacking pads act as cylinder extensions:

